

Action for Healthy Communities

Education Issues

EDUCATION ISSUES

Education issues

There are more graduates than ever coming out of San Luis Obispo high schools, the drop-out rate is lower than it has been in the past four years, and student test scores are higher than the state average. That's some of the good news on the local education front.

The assessment measured local education issues by looking at test scores, graduate and drop-out statistics and public perceptions about school issues.

In the 1997-1998 school year, San Luis Obispo County high schools graduated 2,128 students, compared to 1,953 the previous year.

Following statewide trends, the drop-out rates for local high schools decreased during the same period. Only 1.5% of students dropped-out of local schools, compared with almost 4% in 1993-1994. The statewide dropout rate for 1997-1998 was 3%.

San Luis Obispo students fared better than their state counterparts in SAT testing, the standardized tests given in either the junior or senior year of high school. The average combined math and verbal SAT score for San Luis Obispo graduates was 1058. The state combined average score was 1007.

Schools that stood out in SAT scoring during the 1998-99 school year were San Luis Obispo High School, with an average combined SAT score of 1110; Atascadero High School, which had an average score of 1083; and Morro Bay High School, with an average score of 1070.

In other testing, county schools also excelled. In the STAR tests administered in 3rd, 5th, 7th, 9th and 11th grades, local students far surpassed state averages in reading, math, language, spelling, science and social science.

In the 1997-98 school year, the number of Limited English Proficiency (LEP) students increased to more than 8% of the total local student population. The school districts most impacted by increases in LEP students were Shandon Joint Unified School District, which had almost 20% LEP students; Coast Unified School District, with 17%; and Paso Robles Joint Unified School District, which had more than 14% LEP students.

The assessment also measured parental involvement of their children's schools. Telephone survey results showed that 57% of elementary school parents "often" participate at their children's school, while 33% "sometimes" participate. Forty-four percent of middle school parents said they participate "often" at the schools, and 30% of high school parents said the same.

Overall, local parents feel that their children have enough recreational activities available to them: 86% of elementary school parents said their children have enough activities; 78% of middle school parents and 85% of high school parents said their kids have enough activities.

Local parents are concerned about substance abuse in the schools. For middle school parents, 26% say this is a "very serious" concern, while 30% say it is "somewhat serious" of a concern. In the high schools, 41% of parents say that substance abuse is a "very serious" concern, and 41% say it is a "somewhat serious" concern. According to a 1996 report, local high school students used marijuana at a greater rate than the state average. Self-reports from 7th, 9th and 11th graders show the following rates of use: 15%; 34%; and 44%, respectively — compared to state averages of 30%, 30% and 40% in the same grades.

These grades also reported on their tobacco use: 4% of 7th graders reported that they had smoked 1 to 6 times per day; 8% of 9th graders had; and 8% of 11th graders had smoked, compared with 7% of 11th graders statewide.

Of parents with children ages 0-2, 71% said they have no childcare needs; while 75% of parents with children ages 3-5 said they have no childcare needs.

The supply of child care increased slightly in 1998, up from 6,028 to 6,111 slots. However, demand increased as well, with a decrease in vacancies from 832 to 460.

There also appears to be a greater need for subsidized childcare, as evidenced by the number of children, 631, on waiting lists in subsidized facilities.

Both federally and state funded Head Start programs are also in demand locally. In 1998 there were 162 children awaiting entry into the EOC

EDUCATION ISSUES

Head Start program, and 22 on the State Migrant Head Start program.

INDICATOR 17

High School Graduation

High School Graduates by District

ATASCADERO UNIFIED SCHOOL DISTRICT	95-96	96-97	97-98
Atascadero High	305	310	322
West Mall Alternative	N/a	11	0
Westside Continuation High	N/a	21	12
Oak Hills High (Continuation)	37	29	23
Total	352	371	357
PASO ROBLES SCHOOL DISTRICT	95-96	96-97	97-98
Paso Robles High	301	322	316
Liberty High (Continuation)	23	21	14
Total	324	343	330
TEMPLETON SCHOOL DISTRICT	95-96	96-97	97-98
Templeton High	88	116	106
Templeton Independent	N/a	N/a	35
Total	88	116	141
SHANDON SCHOOL DISTRICT	95-96	96-97	97-98
Shandon High School	18	19	23
SAN LUIS COASTAL UNIFIED SCHOOL DISTRICT	95-96	96-97	97-98
San Luis Obispo High	238	285	285
Pacific Beach Continuation High	39	27	35
Morro Bay High	195	176	217
San Luis Obispo Coastal Special Education	N/a	2	N/a
Total	472	490	537
COAST UNIFIED SCHOOL DISTRICT	95-96	96-97	97-98
Coast Union High	68	71	59
Leffingwell Continuation High	7	8	6
Total	75	79	65
LUCIA MAR UNIFIED SCHOOL DISTRICT	95-96	96-97	97-98
Arroyo Grande High	433	452	520
Lopez Continuation High	65	82	75
Total	498	534	595
GRAND TOTAL	95-96	96-97	97-98

San Luis Obispo County 1,828 1,953 2,128

Source: California Basic Educational Data System (CBEDS), 1999.

INDICATOR 17A

High School Graduates, by Ethnicity

Atascadero Unified School District

ETHNICITY	95-96	96-97	97-98
Caucasian	315	333	319
Hispanic	31	28	23
Asian	7	6	9
African American	4	3	5
Filipino	2	1	1
Native American	3	0	0
Pacific Islander	0	0	0
Total	362	371	357

Paso Robles Unified School District

ETHNICITY	95-96	96-97	97-98
Caucasian	256	272	253
Hispanic	50	53	60
Asian	4	4	6
African American	14	9	7
Filipino	0	0	0
Native American	0	3	4
Pacific Islander	0	2	0
Total	324	343	330

Templeton Unified School District

ETHNICITY	95-96	96-97	97-98
Caucasian	72	99	118
Hispanic	12	11	18
Asian	0	0	1
African American	2	1	1
Filipino	0	2	0
Native American	0	4	3
Pacific Islander	0	0	0
Total	89	117	141

Source: California Basic Educational Data System (CBEDS), 1999.

INDICATOR 17A

High School Graduates, by Ethnicity

continued

Shandon Unified School District

ETHNICITY	95-96	96-97	97-98
Caucasian	7	13	18
Hispanic	8	5	5
Asian	2	0	0
African American	0	0	0
Filipino	0	0	0
Native American	0	1	0
Pacific Islander	1	0	0
Total	18	19	23

San Luis Coastal Unified School District

ETHNICITY	95-96	96-97	97-98
Caucasian	397	420	459
Hispanic	40	35	42
Asian	18	17	16
African American	9	4	12
Filipino	7	10	3
Native American	1	4	2
Pacific Islander	0	0	2
Total	472	490	537

Coast Unified School District

ETHNICITY	95-96	96-97	97-98
Caucasian	62	65	58
Hispanic	12	10	6
Asian	1	2	1
African American	0	1	0
Filipino	0	0	0
Native American	0	0	0
Pacific Islander	0	1	0
Total	75	79	65

Source: California Basic Educational Data System (CBEDS), 1999.

INDICATOR 17A

High School Graduates, by Ethnicity

continued

Lucia Mar Unified School District

ETHNICITY	95-96	96-97	97-98
Caucasian	346	387	431
Hispanic	121	117	134
Asian	8	11	8
African American	7	6	6
Filipino	11	9	10
Native American	4	3	6
Pacific Islander	1	1	0
Total	498	534	595

Source: California Basic Educational Data System (CBEDS), 1999.

INDICATOR 18

High School Dropout Rates

San Luis Obispo County and California

DISTRICTS	93-94	94-95	95-96	96-97	97-98
Atascadero USD	3.6	1.9	2.5	2.2	1.4
Paso Robles Joint USD	6.7	1.3	0.8	1.1	1.1
Templeton USD	2.6	1.8	0.7	0.2	0.0
Shandon Joint USD	1.0	0.9	0.0	0.8	0.0
Coast USD	1.5	2.7	0.8	0.8	0.2
San Luis Coastal USD	3.4	2.2	2.6	2.4	2.0
Lucia Mar USD	2.7	2.9	2.1	2.3	2.0
San Luis Obispo County	3.7	2.1	1.9	1.8	1.5
California	4.9	4.4	3.9	3.3	2.9

Source: California Basic Educational Data System (CBEDS), 1999.

Note: 1 year drop-out rates: the annual dropout rate is calculated by dividing the number of dropouts in grades 9 through 12, by the total enrollment in those grades for the same year. A dropout is a student who meets the following criteria: was formerly enrolled in grades 7, 8, 9, 10, 11, or 12; was formerly enrolled in a school or program leading to a high school diploma or its equivalent; was under 21 years of age; has left school for 45 consecutive school days and has not enrolled in another public or private educational institution or school program; has not received a high school diploma or its equivalent; has not re-enrolled in the school.

INDICATOR 18

High School Dropout Rates, by Ethnicity

San Luis Obispo County

ETHNICITY	93-94	94-95	95-96	96-97	97-98
Caucasian	2.8	1.6	1.5	1.2	1.0
Hispanic	7.7	4.9	3.6	4.8	3.0
Asian	2.8	0.0	0.6	0.5	2.0
African American	7.1	2.1	3.1	1.2	5.0
Filipino	4.1	1.1	0.0	1.9	1.0
Native American	2.4	1.9	1.1	0.0	1.0
Pacific Islander	4.2	0.0	0.0	0.0	4.0
Total	3.7	2.1	1.9	1.8	1.5

California

ETHNICITY	93-94	94-95	95-96	96-97	97-98
Caucasian	2.9	2.7	2.4	2.0	2.0
Hispanic	7.2	6.4	5.6	4.8	4.0
Asian	2.5	2.2	2.0	1.7	2.0
African American	8.0	7.7	6.6	5.1	4.0
Filipino	2.7	2.6	2.3	1.7	2.0
Native American	6.2	4.7	4.7	4.2	4.0
Pacific Islander	5.5	5.1	4.7	3.5	3.0
Total	4.9	4.4	3.9	3.3	2.9

Source: California Basic Educational Data System (CBEDS), 1999.

Note: Dropout rates for 1997-98 have been rounded by CBEDS.

INDICATOR 19

College Preparation Courses

Percent of Graduates Completing College Prep Courses by District

SCHOOL DISTRICT	95-96	96-97	97-98
Atascadero USD	44.2	46.4	52.4
Paso Robles Joint USD	39.8	34.1	41.5
Templeton USD	35.9	64.9	52.5
Shandon Joint USD	33.3	52.6	17.4
Coast USD	41.3	41.7	33.8
San Luis Coastal USD	25.6	46.3	36.5
Lucia Mar USD	25.9	26.2	37.1
San Luis Obispo County	33.3	39.7	37.1
California	35.4	36.0	36.6

Percent of County Graduates Completing College Prep Courses by Ethnicity

ETHNICITY	95-96	96-97	97-98
Caucasian	36.8	42.7	41.9
Hispanic	17.8	18.9	19.1
Asian	40.0	65.0	32.6
African American	19.4	33.3	14.8
Filipino	10.0	40.9	14.3
Native American	9.1	20.0	13.3
Pacific Islander	0.0	25.1	66.7

Source: California Basic Educational Data System (CBEDS), 1999.

Note: 'A-F Course Enrollment', or College Prep Courses, are defined as: courses accepted by the University of California and the California State University system as meeting their admission standards. This includes 1 year of U.S. history, 4 years of English, 3 years of mathematics, 1 year of laboratory science, 2 years of foreign language, and 4 years of college preparatory elective courses.

INDICATOR 20

Test Scores-SAT

SAT Scores by School

PASO ROBLES HIGH SCHOOL	1995	1996	1997	1998
12 th Grade Enrollment	294	352	394	334
Students Tested	134	132	143	132
% Tested	45.6	37.5	36.3	39.5
Average Verbal Score	504	471	524	507
Average Math Score	508	493	527	521
Average Total Score	1,012	964	1,051	1028

ATASCADERO HIGH SCHOOL	1995	1996	1997	1998
12 th Grade Enrollment	291	346	326	355
Students Tested	104	138	136	142
% Tested	35.7	39.9	41.7	40.0
Average Verbal Score	509	534	522	536
Average Math Score	521	536	529	547
Average Total Score	1,030	1,070	1,051	1,083

TEMPLETON HIGH SCHOOL	1995	1996	1997	1998
12 th Grade Enrollment	82	102	133	173
Students Tested	29	25	50	47
% Tested	35.4	24.5	37.6	27.2
Average Verbal Score	516	511	516	488
Average Math Score	489	497	494	478
Average Total Score	1,005	1,008	1,010	966

SAN LUIS OBISPO HIGH SCHOOL	1995	1996	1997	1998
12 th Grade Enrollment	280	268	302	301
Students Tested	152	138	174	165
% Tested	54.3	51.5	57.6	54.8
Average Verbal Score	561	560	566	560
Average Math Score	566	565	578	550
Average Total Score	1,127	1,125	1,144	1,110

Source: California Department of Education, Office of Policy and Evaluation, 1999.

Note: Total possible SAT score is 1600.

Test Scores-SAT, continued

SAT Scores by School, continued

MORRO BAY HIGH SCHOOL	1995	1996	1997	1998
12 th Grade Enrollment	199	196	185	236
Students Tested	55	64	68	71
% Tested	27.6	32.7	36.8	30.1
Average Verbal Score	540	558	536	526
Average Math Score	543	552	540	544
Average Total Score	1,083	1,110	1,076	1,070

COAST UNION HIGH SCHOOL	1995	1996	1997	1998
12 th Grade Enrollment	65	73	70	60
Students Tested	22	37	33	30
% Tested	33.8	50.7	47.1	50.0
Average Verbal Score	480	519	536	509
Average Math Score	512	534	541	541
Average Total Score	992	1,053	1,077	1,050

SHANDON HIGH SCHOOL	1995	1996	1997	1998
12 th Grade Enrollment	27	20	28	24
Students Tested	3	6	10	6
% Tested	11.1	30.0	35.7	25.0
Average Verbal Score	410	410	403	453
Average Math Score	410	377	446	492
Average Total Score	820	787	849	945

ARROYO GRANDE HIGH SCHOOL	1995	1996	1997	1998
12 th Grade Enrollment	470	497	502	624
Students Tested	176	184	190	216
% Tested	37.4	37.0	37.8	34.6
Average Verbal Score	526	531	523	515
Average Math Score	540	531	537	526
Average Total Score	1,066	1,062	1,060	1,041

Source: California Department of Education, Office of Policy and Evaluation, 1999.

Note: Total possible SAT score is 1600.

INDICATOR 20

Test Scores-SAT, continued

SAT Scores by School, continued

SAN LUIS OBISPO COUNTY TOTAL	1995	1996	1997	1998
12 th Grade Enrollment	1,844	2,054	2,179	2,341
Students Tested	675	725	804	810
% Tested	36.6	35.3	36.9	34.6
Average Verbal Score	526	526	532	525
Average Math Score	533	531	539	533
Average Total Score	1,059	1,057	1,071	1,058

CALIFORNIA	1995	1996	1997	1998
12 th Grade Enrollment	285,132	287,428	298,669	317,595
Students Tested	102,782	105,448	108,210	113,968
% Tested	36.0	36.7	36.2	35.6
Average Verbal Score	488	490	490	491
Average Math Score	509	511	514	516
Average Total Score	997	1,001	1,004	1,007

Comparison of Average Total SAT Scores

School, County, and State

	1995	1996	1997	1998
Paso Robles High School	1,012	964	1,051	1,028
Atascadero High School	1,030	1,070	1,051	1,083
Templeton High School	1,005	1,008	1,010	966
San Luis Obispo High School	1,127	1,125	1,144	1,110
Morro Bay High School	1,083	1,110	1,076	1,070
Coast Union High School	992	1,053	1,077	1,050
Shandon High School	820	787	849	945
Arroyo Grande High School	1,066	1,062	1,060	1,041
County	1,059	1,057	1,071	1,058
State	997	1,001	1,004	1,007

Source: California Department of Education, Office of Policy and Evaluation, 1999.

Note: Total possible SAT score is 1600.

Test Scores-STAR

STAR Test Scores- State and County

CALIFORNIA	GRADE LEVEL				
	3	5	7	9	11
Reading					
Students Tested	415,981	395,640	390,659	388,378	303,626
NPR for Average Student Score	36	40	41	34	37
Math					
Students Tested	425,961	408,323	394,942	394,911	306,508
NPR for Average Student Score	42	41	45	50	46
Language					
Students Tested	412,326	404,147	389,042	387,844	301,622
NPR for Average Student Score	39	44	49	47	43
Spelling					
Students Tested	425,430	408,712	396,924	—	—
NPR for Average Student Score	38	38	42	—	—
Science					
Students Tested	—	—	—	392,739	304,267
NPR for Average Student Score	—	—	—	43	44
Social Science					
Students Tested	—	—	—	391,174	302,671
NPR for Average Student Score	—	—	—	42	54

SAN LUIS OBISPO COUNTY	GRADE LEVEL				
	3	5	7	9	11
Reading					
Students Tested	2,453	2,470	2,585	2,776	2,277
NPR for Average Student Score	55	61	59	51	53
Math					
Students Tested	2,519	2,535	2,609	2,800	2,291
NPR for Average Student Score	54	56	60	64	55
Language					
Students Tested	2,413	2,491	2,595	2,747	2,262
NPR for Average Student Score	54	61	63	59	56
Spelling					
Students Tested	2,524	2,538	2,606	—	—
NPR for Average Student Score	44	49	53	—	—
Science					
Students Tested	—	—	—	2,793	2,289
NPR for Average Student Score	—	—	—	56	57
Social Science					
Students Tested	—	—	—	2,763	2,264

NPR for Average Student Score	—	—	—	55	67
-------------------------------	---	---	---	----	----

INDICATOR 21

Test Scores-STAR, continued

STAR Test Scores- District

SCHOOL DISTRICT	GRADE LEVEL				
	3	5	7	9	11
TEMPLETON USD					
Reading					
Students Tested	163	169	178	163	159
NPR for Average Student Score	49	59	61	55	50
Math					
Students Tested	164	178	174	164	159
NPR for Average Student Score	46	54	63	63	44
Language					
Students Tested	159	176	177	164	158
NPR for Average Student Score	54	68	67	58	48
Spelling					
Students Tested	163	176	178	—	—
NPR for Average Student Score	46	49	54	—	—
Science					
Students Tested	—	—	—	164	160
NPR for Average Student Score	—	—	—	62	57
Social Science					
Students Tested	—	—	—	163	160
NPR for Average Student Score	—	—	—	63	63

SCHOOL DISTRICT	GRADE LEVEL				
	3	5	7	9	11
PASO ROBLES JUSD					
Reading					
Students Tested	400	405	381	488	432
NPR for Average Student Score	41	46	48	44	45
Math					
Students Tested	409	407	386	494	440
NPR for Average Student Score	43	43	50	57	48
Language					
Students Tested	393	407	386	478	430
NPR for Average Student Score	43	46	53	55	49
Spelling					
Students Tested	408	409	387	—	—
NPR for Average Student Score	35	38	44	—	—
Science					
Students Tested	—	—	—	488	439
NPR for Average Student Score	—	—	—	49	50
Social Science					
Students Tested	—	—	—	475	427

NPR for Average Student Score	—	—	—	54	63
-------------------------------	---	---	---	----	----

INDICATOR 21

Test Scores-STAR, continued

STAR Test Scores

SCHOOL DISTRICT ATASCADERO USD	GRADE LEVEL				
	3	5	7	9	11
Reading					
Students Tested	441	428	482	487	394
NPR for Average Student Score	61	64	64	56	58
Math					
Students Tested	447	438	486	484	387
NPR for Average Student Score	60	59	59	67	57
Language					
Students Tested	418	439	487	482	388
NPR for Average Student Score	59	62	64	65	64
Spelling					
Students Tested	454	438	486	—	—
NPR for Average Student Score	52	53	54	—	—
Science					
Students Tested	—	—	—	484	386
NPR for Average Student Score	—	—	—	61	59
Social Science					
Students Tested	—	—	—	479	387
NPR for Average Student Score	—	—	—	59	69

SCHOOL DISTRICT PLEASANT VALLEY JUSD	GRADE LEVEL				
	3	5	7	9	11
READING					
Students Tested	18	14	6	—	—
NPR for Average Student Score	50	64	*	—	—
Math					
Students Tested	18	15	6	—	—
NPR for Average Student Score	46	48	*	—	—
Language					
Students Tested	18	15	6	—	—
NPR for Average Student Score	55	57	*	—	—
Spelling					
Students Tested	18	15	6	—	—
NPR for Average Student Score	57	41	*	—	—

Note: In order to protect student confidentiality, asterisks appear when scores are based on 10 or fewer students.

INDICATOR 21

Test Scores-STAR, continued

STAR Test Scores

SCHOOL DISTRICT SAN LUIS COASTAL USD	GRADE LEVEL				
	3	5	7	9	11
Reading					
Students Tested	575	603	623	692	545
NPR for Average Student Score	68	73	63	59	66
Math					
Students Tested	594	614	629	699	550
NPR for Average Student Score	63	65	67	72	69
Language					
Students Tested	567	575	623	688	540
NPR for Average Student Score	63	70	69	66	65
Spelling					
Students Tested	598	615	628	—	—
NPR for Average Student Score	52	60	58	—	—
Science					
Students Tested	—	—	—	699	549
NPR for Average Student Score	—	—	—	63	70
Social Science					
Students Tested	—	—	—	695	541
NPR for Average Student Score	—	—	—	61	79
<hr/>					
SCHOOL DISTRICT SAN LUIS OBISPO COUNTY OFFICE OF EDUCATION	GRADE LEVEL				
	3	5	7	9	11
Reading					
Students Tested	—	2	11	71	11
NPR for Average Student Score	—	*	26	26	30
Math					
Students Tested	—	2	13	80	11
NPR for Average Student Score	—	*	23	27	31
Language					
Students Tested	—	2	12	72	11
NPR for Average Student Score	—	*	16	27	23
Spelling					
Students Tested	—	2	13	—	—
NPR for Average Student Score	—	*	26	—	—
Science					
Students Tested	—	—	—	77	11
NPR for Average Student Score	—	—	—	33	36
Social Science					
Students Tested	—	—	—	74	11

EDUCATION ISSUES

NPR for Average Student Score	—	—	—	30	57
-------------------------------	---	---	---	----	----

Note: In order to protect student confidentiality, asterisks appear when scores are based on 10 or fewer students.

INDICATOR 21

Test Scores-STAR, continued

STAR Test Scores

SCHOOL DISTRICT	GRADE LEVEL				
	3	5	7	9	11
LUCIA MAR USD	3	5	7	9	11
Reading					
Students Tested	701	691	737	757	617
NPR for Average Student Score	50	56	58	49	47
Math					
Students Tested	729	715	747	761	622
NPR for Average Student Score	50	55	61	63	51
Language					
Students Tested	703	715	736	749	617
NPR for Average Student Score	51	59	64	57	52
Spelling					
Students Tested	728	715	741	—	—
NPR for Average Student Score	38	45	53	—	—
Science					
Students Tested	—	—	—	763	622
NPR for Average Student Score	—	—	—	54	50
Social Science					
Students Tested	—	—	—	760	618
NPR for Average Student Score	—	—	—	49	60

SCHOOL DISTRICT	GRADE LEVEL				
	3	5	7	9	11
COAST USD	3	5	7	9	11
Reading					
Students Tested	52	66	60	99	99
NPR for Average Student Score	50	65	57	48	50
Math					
Students Tested	52	72	60	99	100
NPR for Average Student Score	48	42	42	54	52
Language					
Students Tested	52	72	59	95	99
NPR for Average Student Score	48	58	65	52	48
Spelling					
Students Tested	52	72	60	—	—
NPR for Average Student Score	41	40	44	—	—
Science					
Students Tested	—	—	—	99	100
NPR for Average Student Score	—	—	—	54	57
Social Science					
Students Tested	—	—	—	98	99

NPR for Average Student Score	—	—	—	55	64
-------------------------------	---	---	---	----	----

INDICATOR 21

Test Scores-STAR, continued

STAR Test Scores

SCHOOL DISTRICT	GRADE LEVEL				
	3	5	7	9	11
CAYUCOS ELEMENTARY SD	3	5	7	9	11
Reading					
Students Tested	42	25	33	—	—
NPR for Average Student Score	70	90	62	—	—
Math					
Students Tested	43	27	33	—	—
NPR for Average Student Score	61	83	59	—	—
Language					
Students Tested	43	27	33	—	—
NPR for Average Student Score	52	83	66	—	—
Spelling					
Students Tested	43	27	33	—	—
NPR for Average Student Score	44	66	50	—	—

SCHOOL DISTRICT	GRADE LEVEL				
	3	5	7	9	11
SHANDON JUSD	3	5	7	9	11
Reading					
Students Tested	24	21	28	19	20
NPR for Average Student Score	22	34	24	36	22
Math					
Students Tested	24	21	28	19	22
NPR for Average Student Score	32	32	35	65	20
Language					
Students Tested	23	21	28	19	19
NPR for Average Student Score	30	42	43	44	21
Spelling					
Students Tested	23	21	28	—	—
NPR for Average Student Score	29	28	30	—	—
Science					
Students Tested	—	—	—	19	22
NPR for Average Student Score	—	—	—	54	24
Social Science					
Students Tested	—	—	—	19	21
NPR for Average Student Score	—	—	—	39	36

INDICATOR 21

Test Scores-STAR, continued

STAR Test Scores

SCHOOL DISTRICT SAN MIGUEL JUSD	GRADE LEVEL				
	3	5	7	9	11
Reading					
Students Tested	37	46	46	—	—
NPR for Average Student Score	41	55	54	—	—
Math					
Students Tested	39	46	47	—	—
NPR for Average Student Score	58	49	66	—	—
Language					
Students Tested	37	42	48	—	—
NPR for Average Student Score	39	47	57	—	—
Spelling					
Students Tested	37	48	46	—	—
NPR for Average Student Score	34	31	56	—	—

Source: California Department of Education, 1999.

* In order to protect student confidentiality, asterisks appear when scores are based on 10 or fewer students.

Note: The Standardized Testing and Reporting (STAR) program was authorized by Senate Bill (SB) 376 in October, 1997. The Stanford Achievement Test Series, Ninth Edition, Form T (Stanford 9) was designated as the 1998 STAR test in November, 1997. The Stanford 9 is a multiple-choice test that allows comparisons to be made to a national sample of students. The average student's national percentile rank (NPR) is shown here. A student who scored at the 56th percentile did better than 55 percent of the national sample. Students in grades 2 through 8 were tested in reading, math, language and spelling. High school students through grade 11 also took tests in science and social science, but not spelling.

INDICATOR 22

Bilingual Education

Percent of Limited English Proficient (LEP) Students by District

DISTRICT	96-97	97-98
Atascadero USD	0.9	1.5
Cambria Union Elementary	18.7	N/A
Cayucos Elementary SD	5.5	4.8
Coast USD	10.7	16.6
Lucia Mar USD	10.9	11.5
Paso Robles Joint USD	13.8	14.4
Pleasant Valley Joint USD	5.8	9.3
San Luis Coastal USD	5.6	5.3
San Luis Obispo Co. Office of Ed.	1.8	1.6
San Miguel Joint Union Elementary SD	4.7	3.0
Shandon Joint USD	16.9	19.7
Templeton USD	2.1	3.1
San Luis Obispo County	7.9	8.3
State	24.6	24.6

Source: California Basis Educational Data System (CBEDS), 1999.

INDICATOR 23

Literacy

The following 1996 Adult Literacy Estimates were produced using statistical models, reliable with a 95% confidence interval. The National and State Adult Literacy surveys characterize adults' literacy skills in English based on their performance on diverse tasks, similar to the type of demands adults encounter in their daily lives. The three types of literacy tested are:

Prose Literacy: Prose consists of printed information in the form of connected sentences and longer passages that define, describe, or inform, such as newspaper stories or written instructions. Narrative prose tells a story. Prose Literacy implies that people can locate information, find all the information, integrate information from various parts of a passage of text, and write new information related to the text.

Document Literacy: Documents consist of structured prose and quantitative information, in complex arrays arranged in rows and columns, such as tables, data forms, and lists, tables of contents or

indexes, graphs, charts, and maps. Document Literacy means that people can locate information, integrate information from various parts of a document, and write new information as requested in appropriate places in a document.

Quantitative Literacy: Quantitative information may be displayed visually in graphs or charts or it may be displayed in numerical form using whole numbers, fractions, decimals, percentages, or time units (hours and minutes). Quantitative Literacy means that people can locate quantities, repeat the search as many times as needed to find all the numbers, integrate information from various parts of a document, and perform arithmetic operations.

Based on their responses to the survey tasks, adults received proficiency scores for these three types of literacy. There are five levels of proficiency, ranging from 0 to 500 (source: 1992 National Adult Literacy Survey, National Center for Education Statistics and Portland State University, California Department of Education, 1996.)

Average State Literacy Level, by Educational Attainment, 1992

LEVEL OF EDUCATION ATTAINED	PROSE LITERACY AVE. SCORE	DOCUMENT LITERACY AVE. SCORE	QUANTITATIVE LITERACY AVE. SCORE
0 to 8 grade	152	145	148
9 to 12 grade	225	219	225
High School Diploma	264	257	262
GED	263	259	261
Some Post Secondary	297	292	297
4 year College Degree	331	322	331

Source: State Adult Literacy Survey- Adult Education Office, 1992.

INDICATOR 23

Literacy, continued

Literacy estimates and comparison to average annual earnings

Average Annual Earnings, by Literacy Proficiency Level, 1992

PROFICIENCY LEVEL	PROSE LITERACY	DOCUMENT LITERACY	QUANTITATIVE LITERACY
Level 1: Score 225 & lower	\$18,000	\$18,050	\$17,390
Level 2: Score 225 to 275	\$29,380	\$30,160	\$28,980
Level 3: Score 276 to 325	\$39,390	\$40,410	\$39,970
Level 4: Score 326 to 375	\$53,590	\$51,610	\$52,590
Level 5: Score 376 & higher	\$66,990	\$64,040	\$64,580

Note: this is the average salary that a person would receive by test score level.

Source: State Adult Literacy Survey- Adult Education Office, 1992.

City, County and State Literacy Estimates, 1996

JURISDICTION	MEAN LITERARY PROFICIENCY	PERCENT AT LEVEL 1 (SCORE: 0- 225)	PERCENT AT LEVEL 1 OR 2 (SCORE: 0- 275)
Atascadero	289	11.0	31.0
Paso Robles	270	20.0	45.0
Grover City	271	18.0	44.0
San Luis Obispo	299	12.0	28.0
Arroyo Grande	285	16.0	36.0
San Luis Obispo County	282	17.0	38.0
California	266	24.0	46.0

Source: Portland State University, California Department of Education, 1996.

INDICATOR 24

Educational Attainment

County Division, State and National Percent Comparisons, 1990

ATTAINMENT LEVEL	ARROYO GRANDE	SAN LUIS OBISPO	PASO ROBLES	ATASCADERO	NORTH COAST	STATE	NATIONAL
Less than 9th Grade	7.8	4.4	7.6	3.9	3.3	11.6	10.4
9th to 12th Grade, No Diploma	12.2	10.9	13.2	4.0	7.9	12.6	14.4
High School Graduate/ GED	26.6	19.7	28.7	26.1	22.6	22.3	30.0
Some College, No Degree	29.9	26.6	27.2	27.9	28.4	22.6	18.7
AA Degree	7.9	8.9	7.2	10.0	9.8	7.9	6.2
BA Degree	12.8	18.8	12.1	14.4	19.3	15.3	13.1
Graduate or Professional Degree	5.6	11.5	3.9	6.5	8.5	8.1	7.2
% High School Graduates	79.9	85.5	79.1	84.9	88.6	75.9	75.2
% BA and Higher	18.4	30.3	16.0	20.9	27.8	23.2	20.3

Source: U.S. Census, 1990.

INDICATOR 25

Parental involvement in Schools

 Telephone Survey Results

How often do you participate in activities in your child(ren)'s schools(s) (educational and extra curricular activities)?

ELEMENTARY SCHOOL	NUMBER	PERCENT
Often	66	56.9
Sometimes	38	32.8
Never	12	10.3
Total respondents	116	100.0

MIDDLE SCHOOL	NUMBER	PERCENT
Often	20	43.5
Sometimes	19	41.3
Never	7	15.2
Total respondents	46	100.0

HIGH SCHOOL	NUMBER	PERCENT
Often	17	29.8
Sometimes	26	45.6
Never	14	24.6
Total respondents	57	100.0

Source: 1999 Action for Healthy Communities, Telephone Survey.

INDICATOR 26

Activities for Youth

Telephone Survey Results

Does your child(ren) have enough activities after school and on weekends (including recreational)?

ELEMENTARY SCHOOL	NUMBER	PERCENT
Yes	101	86.3
No	16	13.7
Total respondents	117	100.0

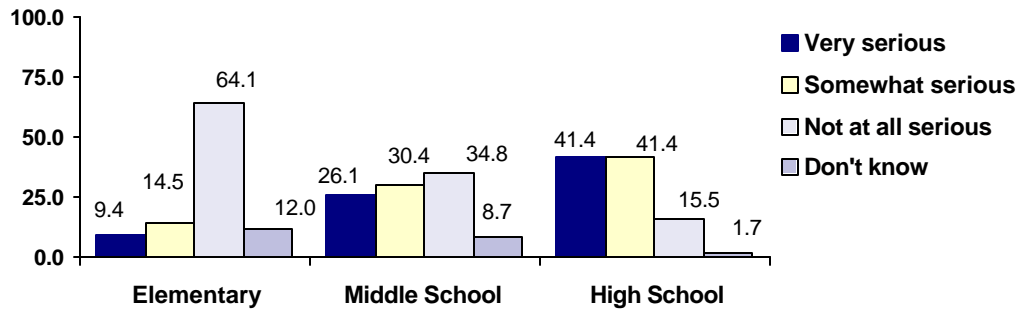
MIDDLE SCHOOL	NUMBER	PERCENT
Yes	35	77.8
No	10	22.2
Total respondents	45	100.0

HIGH SCHOOL	NUMBER	PERCENT
Yes	49	84.5
No	9	15.5
Total respondents	58	100.0

Source: 1999 Action for Healthy Communities, Telephone Survey.

INDICATOR 27

Substance Abuse in Schools



 Telephone Survey Results

How serious would you say the alcohol and drug abuse problem is at your child(ren)'s school?

ELEMENTARY SCHOOL	NUMBER	PERCENT
Very serious	11	9.4
Somewhat serious	17	14.5
Not at all serious	75	64.1
Don't know	14	12.0
Total respondents	117	100.0

MIDDLE SCHOOL	NUMBER	PERCENT
Very serious	12	26.1
Somewhat serious	14	30.4
Not at all serious	16	34.8
Don't know	4	8.7
Total respondents	46	100.0

HIGH SCHOOL	NUMBER	PERCENT
Very serious	24	41.4
Somewhat serious	24	41.4
Not at all serious	9	15.5
Don't know	1	1.7
Total respondents	58	100.0

INDICATOR 27

Substance Abuse in Schools, continued

Responses by Area of Residence

How serious would you say the alcohol and drug abuse problem is at your child(ren)'s school?

ELEMENTARY(K-5)	NORTH COUNTY	NORTH COAST	SAN LUIS OBISPO	SOUTH COUNTY
Very serious	8.2	0.0	13.3	10.3
Somewhat serious	12.2	15.4	13.3	17.9
Not at all serious	65.3	69.2	73.3	59.0
Don't know	14.3	15.4	0.0	12.8
Total	49	13	15	39

JUNIOR HIGH/MIDDLE SCHOOL(6-8)	NORTH COUNTY	NORTH COAST	SAN LUIS OBISPO	SOUTH COUNTY
Very serious	19.0	25.0	20.0	41.7
Somewhat serious	28.6	50.0	20.0	25.0
Not at all serious	38.1	12.5	60.0	33.3
Don't know	14.3	12.5	0.0	0.0
Total	21	8	5	12

HIGH SCHOOL(9-12)	NORTH COUNTY	NORTH COAST	SAN LUIS OBISPO	SOUTH COUNTY
Very serious	33.3	45.5	16.7	55.0
Somewhat serious	47.6	36.4	83.3	25.0
Not at all serious	19.0	18.2	.0	15.0
Don't know	0.0	0.0	0.0	5.0
Total	21	11	6	20

INDICATOR 27A

Student Self-Reports of Substance Use

Percent of Students Who Reported Using Each Substance in the Last 6 Months, by County and State- 1996

SUBSTANCE	7TH GRADERS		9TH GRADERS		11TH GRADERS	
	SLO	STATE	SLO	STATE	SLO	STATE
Beer	37.0	39.4	52.0	57.2	64.7	63.3
Wine	37.9	41.8	49.2	57.6	54.9	60.3
Liquor	20.5	—	44.2	—	55.0	—
Marijuana	15.2	30.4	34.4	30.4	43.6	40.0
Hashish	2.2	5.2	5.7	5.2	9.4	8.4
Amphetamines	3.5	7.5	6.3	7.5	9.9	10.1
Cocaine	3.0	6.1	4.6	6.1	6.7	4.9
Inhalants	13.3	21.5	13.4	21.5	8.7	13.1
LSD	2.6	8.6	8.0	8.6	13.9	12.2
Other Hallucinogens	2.3	3.1	4.4	3.1	8.8	4.3
Barbiturates	0.5	2.3	1.5	2.3	2.1	1.7
Sedatives	0.8	2.5	2.7	2.5	3.6	3.3
Tranquilizers	2.1	6.3	5.5	6.3	7.6	7.0
PCP	3.9	5.4	3.5	5.4	2.7	3.7
Heroin	1.2	2.4	1.5	2.4	1.4	1.4
Other Narcotics	2.7	6.6	7.0	6.6	7.8	7.8
Smoking Tobacco	25.0	—	36.9	—	45.8	—
Smokeless Tobacco	7.6	—	12.1	—	18.7	—
Steroids	1.7	—	2.1	—	1.8	—

Source: San Luis Obispo County Youth Substance Use Survey-1996, and the Sixth Biennial Student Substance Use Survey-1995-96.

Note: The figures above reflect student self reports of substance use during the twelve months prior to the survey. In San Luis Obispo, 4,923 youths participated in the survey.

INDICATOR 27A

Student Self-Reports of Substance Use

National Comparisons - Use in last 12 months

SUBSTANCE	8TH GRADERS 1993	10TH GRADERS 1993	12TH GRADERS 1993	12TH GRADERS 1996
Alcohol	26.0	42.0	51.0	—
Been Drunk	8.0	20.0	29.0	52.0
Marijuana	5.0	11.0	16.0	36.0
Cocaine	1.0	1.0	1.0	5.0
Stimulants	4.0	4.0	4.0	10.0
Inhalants	5.0	3.0	3.0	8.0
Nitrites	—	—	<1.0	2.0
Downers	—	—	1.0	5.0
Hallucinogens	1.0	2.0	3.0	10.0
PCP	—	—	1.0	3.0
Narcotics other than heroin	—	—	1.0	5.0

Source: "Monitoring the Future". Institute for Social Research, University of Michigan, 1993 and 1996.

INDICATOR 27B

Student Self Reports of Tobacco Use

Number of cigarettes smoked in the last month- County and State Comparisons- 1996

CIGARETTES	7 TH GRADERS		9 TH GRADERS		11 TH GRADERS	
	SLO	STATE	SLO	STATE	SLO	STATE
Smoked once or a few times a month	14.0	10.2	17.2	14.8	19.0	12.1
Smoked Daily	6.4	2.0	13.3	8.4	18.2	11.6
- Used 1-6 times daily	4.0	2.4	7.8	5.0	8.4	6.7
- Used 7 or more times daily	2.4	1.3	5.5	3.6	9.8	5.6

Source: San Luis Obispo County Youth Substance Use Survey-1996, and the Sixth Biennial Student Substance Use Survey-1995-96.

Note: The State survey does not break out the number of cigarettes smoked per day; only daily use versus occasional monthly use.

INDICATOR 28

Child Care

 Telephone Survey Results

Thinking about your childcare needs, what kind of child care do you need for your children but cannot get?

Those with children 0 - 2 years

RESPONSE	1999	
	NUMBER	PERCENT
None needed	32	71.1
Part time (0-6hrs/day)	5	11.1
Full time (6-8hrs/day)	5	11.1
Non traditional hours	1	2.2
Intermittent care	2	4.4
Total	45	99.9

Those with children 3-5 years

RESPONSE	1999	
	NUMBER	PERCENT
None needed	42	75.0
Part time (0-6hrs/day)	5	8.9
Full time (6-8hrs/day)	4	7.1
Non traditional hours	4	7.1
Intermittent care	4	7.1
Total	59	105.4

Those with children 6-14 years

RESPONSE	1999	
	NUMBER	PERCENT
None needed	72	80.0
Part time (0-6hrs/day)	8	8.9
Full time (6-8hrs/day)	1	1.1
Non traditional hours	6	6.7
Intermittent care	6	6.7
Total	93	103.3

EDUCATION ISSUES

Source: 1999 Action for Healthy Communities, Telephone Survey.

INDICATOR 28A

Child Care Availability

Child Care Supply- Licensed Slots and Vacancies

ENROLLMENT	1996		1998	
	LICENSED SLOTS	VACANCIES	LICENSED SLOTS	VACANCIES
San Luis Obispo	1,815	145	1,643	59
Atascadero	918	195	1,048	86
Arroyo Grande	933	140	851	73
Cambria	142	9	80	2
Cayucos	28	4	36	1
Grover Beach	280	43	395	16
Los Osos	364	48	415	59
Morro Bay	182	9	206	29
Oceano	163	21	167	14
Paso Robles	686	101	698	53
Pismo Beach	93	19	65	22
Templeton	148	12	170	9
Avila Beach	0	0	0	0
Nipomo	172	77	265	35
Shell Beach	20	6	14	0
Santa Margarita	44	1	38	2
Shandon	14	1	0	0
San Miguel	26	1	20	0
Total	6,028	832	6,111	460

Source: San Luis Obispo Child Care Planning Council, EOC Child Care Resource Connection, 1999.

INDICATOR 28A

Child Care Availability, continued

Slot Vacancy Trends-Center and Family Based Child Care

	1992	1993	1994	1995	1996	1997	1998
Family Child Care Home Vacancies	534	504	513	494	564	600	330
Child Care Center Vacancies	503	613	334	339	265	122	130
Total	1,037	1,117	847	833	829	722	460

Waiting lists in Selected Subsidized Child Care and Development Programs

AGENCY	98-99
SLO Child Development Center	145
Paso Robles Public Schools	444
California State Preschool	42
Total number of children on Waiting List	631

Source: San Luis Obispo Child Care Planning Council, EOC Child Care Resource Connection, 1999.

INDICATOR 29

Pre-school Enrollment

Enrollment in Head Start Programs

EOC HEAD START	1997-98	1998-99
Enrollment	387	387
Waiting list: 3 year olds	N/a	31
4 year olds	N/a	82
5 year olds	N/a	49

EOC MIGRANT HEAD START	1997-98	1998-99
Enrollment	49	49
Waiting list	0	0

EOC STATE MIGRANT HEAD START PROGRAM	1997-98	1998-99
Enrollment	75	75
Waiting list: 0-3 year olds	N/a	16
3-5 year olds	N/a	6

Source: Economic Opportunity Commission (EOC), Child Care Resource Connection, 1999.

Notes: EOC Head Start is a federally funded, center-based head start. EOC Migrant Head Start is also federally funded, runs at full enrollment capacity, and does not have a waiting list. These programs are funded by the Department of Health and Human Services. The EOC State Migrant Head Start Program is funded by the California Department of Education and has a waiting list, mostly for infant and toddler care.

The EOC Migrant Head Start and State Migrant Head Start Program differ from the federally funded EOC Head Start in that they use center-based models as well as licensed family day care centers for provision of Head Start services. These two programs also offer child care.